



In This Issue

President’s Message – Greg Holden – 1

Au revoir...Farewell to Silvia Picon – Greg Holden - 2

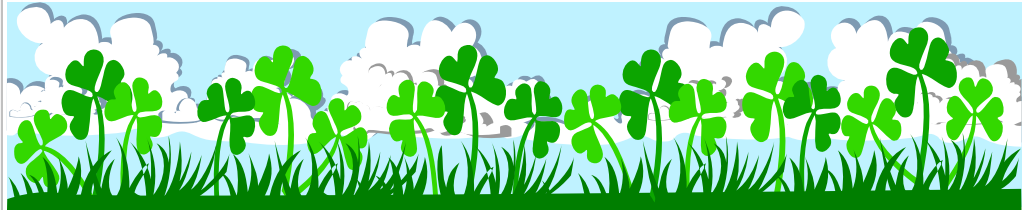
Lester F. Richardson Memorial Scholarship – Frances Spencer - 3

Conversation with Greg Holden – Frances Spencer - 4

Your Scholarship Program – Mary Ellen Lewis – 8

2008 Auction and Raffle

Scholarship Facts - throughout



Foundation Pride – President’s Message

In a recent interview, Fran Spencer asked me what I’ve gained personally by serving as President of the Foundation. My immediate response was personal satisfaction and pride in the development, growth, and impact of our educational and scholarship programs. I get great pride out of being able to hand a check to one of our own members that will be used to further their business education and training.

With our plan to award \$1,000 in educational grants and \$4,500 in scholarships this year, we will have nearly doubled the total amount we awarded to Phi Chi Theta and its members since 2006.

This substantial growth is due in large part to the Board’s commitment to “Building the Future” of Phi Chi Theta by broadening the depth of our programs and outreach. It is also attributed to the increased awareness and communication that we have with each of you, the members of Phi Chi Theta Fraternity, who are eligible to participate in the outstanding educational and scholastic programs.

Our success is further compounded, year after year, by the increased quality and quantity of the scholarship applications. It is increasingly challenging, yet rewarding, for the scholarship committee

to select from a pool of applicants that truly exemplify the qualities of leadership, scholastic achievement, and commitment to Phi Chi Theta.

All the applicants share common qualities and characteristics. I’ll let you in on a little secret though...the applicants that truly stand out from the pack clearly demonstrate the characteristics and values of a business leader. Characteristics that include:



Mentoring and willingness to share knowledge and experience



Extensive involvement and impact in Phi Chi Theta and community



The evaluation committee is made up of a diverse group of alumni and respected business professionals, from across the four regions

All donations to the Foundation and the scholarship programs are tax-deductible



**Submit
your
application
before
May 1!**



Willingness and drive to “step-up” and assume leadership responsibilities

Recognizing and rewarding scholastic achievement is so important to our members that each year we publish this special edition of eEdNews. In this issue, you’ll hear first-hand from past scholarship recipients on the Do’s and Don’ts in completing your scholarship application. We’ll share some frequently asked questions about the application process.

You’ll learn a little more about the person behind the Lester Richardson Memorial Scholarship. Finally, in our continuing interview with a Board Member series, you’ll get to learn more about yours truly.

I hope you share the same sense of pride and enthusiasm that I have in the Foundation’s scholarship program.

Demonstrate your pride by actively participating in the scholarship program.

Please take the valuable tips and pointers in this issue and apply them towards completing and submitting your application by May 1. I could be recognizing and rewarding you with a check this summer at the National Chapter Meeting in Memphis, TN.



Au revoir and meilleurs vœux



Earlier this year, Foundation Board member Silvia Picon (New York Beta) left the Big Apple (New York, NY) and relocated to the City of Lights (Paris, France) to take on a new 3-year assignment.

This new opportunity will enable her to broaden the depth of her professional skills

and experience new cultures, challenges, and rewards.

Her dedication and commitment to the mission and ideals of the Foundation and Fraternity will be greatly missed.

Please join me in thanking Silvia for her service to the Foundation and wishing

her well in all her future endeavors.

Silvia can be reached at Vlasii@yahoo.com.

– Greg Holden



Mont St Michel

The Trustees’ Scholarship is named in memory or in honor of a Phi Chi Theta member who has made a substantial contribution and impact to Phi Chi Theta Fraternity and/or their local community

Lester F. Richardson Memorial Scholarship



Lester F. Richardson

Two years ago, the Foundation set a goal to raise \$5,000 by August 2008 for the Irene Meyer Memorial Scholarship Fund. In January, we exceeded our goal and are planning to award a \$1,000 scholarship this summer at the National Chapter Meeting



As a retail store owner, author, and pastor, Lester F. Richardson was a man of many talents and a great believer in the importance of education. It is this focus on learning that encouraged Dr. Danity Little, his daughter, a former National President of Phi Chi Theta and current Foundation Board member, to establish the Lester F. Richardson Memorial Scholarship in 2005.

Dani remembers helping her father shelve and price cans of food in his grocery store and making change for customers - all part of practicing her arithmetic skills - at the age of 6! To encourage her to learn, he frequently told her

"Keep going; education is something that can never be taken away."

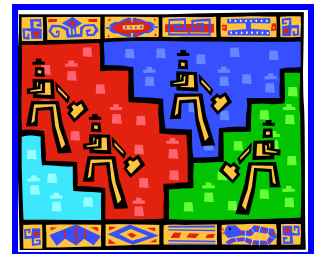
Her dad was always there to encourage her through her school years as he was also a student, attending classes part-time to obtain his Masters Degree in Business Administration from Rollins College after earning his B.A. from Southeastern College.

"education is still one of the best ways for women to succeed in the business world!"

As he followed Dani's progress through her Doctorate studies, the publishing of her first book (the first "Glass Ceiling" book, which addressed barriers for women in business), and serving as Phi Chi Theta's National President, he reminded her "See, I told you - education is still one of the best ways for women to succeed in the business world."

Lester was an author himself. His book, *Out Of God Came Man*, was part of his journey as a teacher, pastor, and evangelist. In this role, he started the largest Pentecostal church in Winston-Salem, NC, building this church from one member to the thousands currently in the congregation. In his "spare time," Lester and his wife, Boots, raised four children and found time to enjoy travels throughout the U.S. and internationally.

The Foundation thanks Dani for providing this additional scholarship opportunity in honor of her late father, Lester F. Richardson.



Elise Marie Kidd (Zeta Gamma) is the only member to have been selected as a Scholarship recipient two years in a row (2006 Helen D. Snow, 2007 Naomi L. Satterfield Scholarship)

Max Snitkovsky (Epsilon) is the first male to have been selected as a scholarship recipient (2006 Lester F. Richardson Scholarship)



Conversation with Greg Holden

Frances Spencer interviewed President and Board Member Greg Holden

Fran: *You work for what is probably the best management consulting firm in the country. What was your career path prior to Booz Allen Hamilton?*

Greg: I joined Booz Allen Hamilton in 1992 as a Consultant providing Help Desk and Local Area Network (LAN) support in our government business sector. So I was on the receiving end of those calls from users about how do I start my computer, my coffee holder (CD-ROM player) is broken, or where is the “any” key (as in “Press Any Key to Continue”).

Prior to joining Booz Allen, I worked for two small Department of Defense contractors as a System Programmer doing dBASE/Clipper application development. I was responsible for building and maintaining an application that provided contract tracking and management support for Navy ship construction and maintenance contracts.

In the 15 years that I have been at Booz Allen, I have had the opportunity to change career paths: from Help Desk consultant to Web Application Development to IT Project and Program Management. Along the way, I have supported a multitude of government clients, including the IRS, FDA, GSA, and the Department of Treasury. Today, I provide IT Program Management support in the development and delivery of quality IT solutions and mission-focused services for Treasury clients.

Fran: *Networking is not only a buzzword but a way of life in our business world. What do you feel is a most effective networking strategy?*

Greg: In order to be successful, networking and making those connections with people

professionally is very important. You never know when you might need to tap into that network for career advice and mentorship, a specialized skill, or perhaps that next great job opportunity. Getting out from behind your computer and connecting with people face-to-face is the best way to build your network.



You want to look for organizations and people that share and a common interest with you but also provide a breadth and depth of knowledge and capabilities across the organization.

Belonging to and participating in national organizations like Phi Chi Theta and the Project Management Institute (PMI) provide outstanding forums for building and growing your network. Many companies have forums for like-minded professionals to get together and share information and learn about the unique skills and capabilities that each of us has.

Here at Booz Allen, I’m involved with our GLBT [Gay, Lesbian, Bisexual, Transgender] organization (GLOBE) and several technology forums on project management and systems development. You have no idea how many people I have met over the years and the number of times that I have been able to reach out to someone in my network to get advice and expertise.

Today, each of you is building a network through your participation in your local PCT chapter. I challenge you to look beyond your local affiliation and connect with the wider network of a national organization with over 30 chapters, 800 members, and thousands of alums.

Reach out and connect with your national officers, the Foundation, and the other chapters and alumni in your region. **Participate in the national educational and scholarship programs. Register to attend the National Meetings and Regional Conferences. Volunteer to serve as an officer or committee chair at the national level.** Remember, as you



network with fellow colleagues, business professionals, and friends, your sphere of influence and knowledge expands exponentially.

Fran: *If there is one thing about the Foundation that you want everyone to know, what would it be?*

Greg: Participate in and support the Foundation! The Foundation is here to support the members of Phi Chi Theta Fraternity who are recipients of the outstanding educational and scholastic programs that we offer. These programs are only made possible through your active participation and generous support. Here is how you can get involved and remain involved as your PCT experience evolves over a lifetime:

Scholastic Recognition – Complete and submit your scholarship application by May 1st

Networking – Register to attend the 2008 National Chapter Meeting in Memphis and actively participate in the many professional and networking opportunities

Become a Donor – Commit to making an annual donation to the Foundation

Support Special Projects – Commit to donating a product (e.g., airline tickets, hotels, concert tickets) or service (e.g., spa treatment, dinner, career counseling) that we can auction or raffle this summer

Talk Us Up – Promote the value that the Foundation brings to the table in building the future of Phi Chi Theta and its members

Fran: *In your position at BAH, you are on the front line in recognizing changes in the corporate world. What advice would you offer to PCT graduates regarding their career choices?*

Greg: Take the initiative to drive your career goals and aspirations. Don't wait for it to be handed to you on a silver platter, because it won't happen. Do you want to be Partner for the leading management consulting company in 5 years? Do you want to travel the world and experience new cultures? Do

you want to work on short and dynamic engagements or do you prefer the stability of longer term projects? Do you want to become an industry leader in advanced information systems technology and solutions? *Your goals and aspirations are only bound by the limits of your imagination.*

On day 1, sit down with your manager and layout what you are looking for from a career growth standpoint and the type of challenges and opportunities that you would like to pursue. Then ask your manager what you need to do to realize your goals and aspirations. As questions such as: What kind of skills and functional competencies do I need to develop? What types of clients and projects are best suited for me? What type of people do I need to “get to know”? How can we work together to map out a career path that will enable me to realize these goals and aspirations?



Your professional development plan is a partnership between you and your manager. Together, you should develop a realistic action plan and timeline that you, your manager, and your colleagues can work toward.

In many cases, it will be a multi-year plan and is bound to change and evolve over time.

Once you have your professional development plan, you should plan to sit down with your manager and/or mentor periodically to get feedback, look for areas that could use a little tweaking or refinement, and revisit how what you are doing aligns to your end goals. *Be open to the feedback, whether it is positive or negative.*

Keep in mind that many of the “seasoned” professionals have “been there and done that.” So don't brush off their feedback and advice. They are the ones that can open the doors for you and just as easily slam them shut. Listen to what they say and demonstrate through hard work and tangible results what you are capable of doing. By doing so, those doors of opportunity will open wide to you.

Fran: *Biking and hiking are two of your hobbies; do you have other non-work interests as well?*

Greg: Cooking and entertaining. We enjoy having friends over for the dinner parties and open houses that we host throughout the year. I enjoy the challenge associated with planning the menu and timeline and then being able to pull it all together to execute it. We subscribe to Bon Appétit and Fine Cooking magazines. Each month as I go through the magazines, I enjoy finding new and interesting recipes and cooking techniques and then finding time to try them out on our friends. Over the holidays, I was recruited to prepare and cook Thanksgiving dinner for my partner's family with less than a weeks notice. This was followed up by our annual holiday Open House in which I prepare a buffet of meats, salads, and desserts for our friends and neighbors. It is a lot of work but very rewarding when people are able to enjoy the food and share in good company.

Fran: *Tell me something about you that would surprise our readers.*

Greg: I'm a reality TV junkie; in particular, I enjoy watching Survivor, Big Brother, The Amazing Race, Top Chef, and American Idol. I've also been known to stoop down into the truly trash heap of reality shows, including Flavor of Love and I Love New York. I like to watch the inter-personal dynamics and conflicts play out. It is also fun to watch the strategies unfold and/or unravel as the contestants try to outplay, outwit, and outlast the others.

Sometimes I play what would I do in that situation, and how would I do on a reality show. Then reality hits me. There is no way I could survive 39 days of starvation and backstabbing, 3 months of being confined in a house, or 30 days of traveling across the globe and time zones; I'm not trained as a culinary chef; and I know I can't carry a tune. So I'm content to live my life as a voyeur of the fools that try to make a name for themselves on reality TV.

Fran: *What was your favorite class subject in college and why?*

Greg: Of course being a Computer Information Systems (CIS) major and IT business professional, I am going to have to say that the classes

associated with my major were the most enjoyable. This includes Computer Security, Database Design and Telecommunications.

At the time, they were leading edge classes that were taught by enthusiastic and knowledgeable professors that made the coursework engaging through group projects and team assignments. Today, the knowledge gained from these three courses is still relevant, and I still apply these fundamental principles when building and providing IT solutions and services for my client.

For a non-technical favorite class, I would have to say 3 semesters of Psychology at the community college. I had a really great professor that made the class engaging and interactive as she lectured on the dynamics of human and animal behavior. Many of the topics covered (e.g., motivation, perceptions, emotion, stress) in this series of classes really come to bear as I lead and interact with people day in and day out in the workplace. We even did a case study on the interpersonal conflicts of between Petruccio and Katherine in Shakespeare's Taming of the Shrew.



Fran: *Everyone has those "I remember when..." moments. What is a past memory that stands out in your mind?*

Greg: I remember when I was initiated into the Delta Sigma Chapter of PCT at James Madison University. It was April 1987, and my suitemate and I had spent the semester working on rebuilding the chapter at JMU. We recruited over 40 business students. Over the course of 8 weeks, we built a comradeship and executed the programs needed to breathe new life into the organization.

On the date of our initiation, Zita Reis, Eastern Regional Director along with Danity Little (Foundation Board member and former National President), and Alma Shea (deceased, former National Vice President for Internal Affairs) traveled to JMU to reactivate the chapter and initiate 40 new Phi Chi Theta members. As I was being pinned, I remember thinking to myself that someday I want to have Zita's job.



Well, two years later at the 1989 National Chapter Meeting in Kissimmee, FL, that aspiration became a reality when I was elected Eastern Regional Director of Phi Chi Theta. Before this happened, though, we had to deal with the business matter of whether or not to fold the organization. *Thanks to the commitment and dedication of key PCT members, the organization stayed together and as they say, the rest is history.*

Fran: *You have been a member of Phi Chi Theta for over 20 years and have held a number of offices. Which part of these years was most meaningful to you?*

Greg: Each phase of my PCT experience has been meaningful for me because of the skills gained, contributions made, and the lessons I have learned along the way. From the early days of my PCT experience and the need to build self-confidence and awareness in who I am as an individual to today as a leader and broadening the depth of my leadership experience and ability to inspire others.

Yes, there have been many roadblocks and frustrations along the way, but overall it has been a very rewarding and meaningful experience. I look forward to many more years of service and contribution to PCT.

Fran: *If you could live anywhere in the world, where would it be?*

Greg: My partner of 13 years and I enjoy traveling and seeing new destinations. We've backpacked and hiked in the Rockies, Yellowstone, and the Grand Canyon; skied in New Mexico, Colorado, and British Columbia; enjoyed sunny beaches; kayaked the Nepali Coast (Hawaii); experienced the Opening Ceremonies and competitive winter sporting events at the 2006 Winter Olympics in Torino, Italy; and have enjoyed exploring numerous cities and towns.

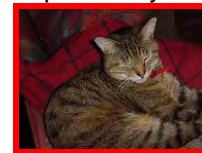


Greg and Chris at the 2006 Winter Olympics, Rome, Italy.

We're looking forward to backpacking in the Swiss Alps this summer after the National Chapter Meeting. Each destination has had its pluses, minuses, and impact based upon the experience at the time. However, there hasn't been one place that has hit me that I wish I could live there. Until that day comes, there are still many more places and destinations to see, including Australia and New Zealand.

Fran: *Have I forgotten to ask about anything that is important to you? If so, here's your opportunity to "speak your piece."*

Greg: Outside of work and PCT, my wonderful partner of 13 years, Chris Zebrowski, and our family of four adorable kitty cats (Scruffy, White Paw, Mittens, and Mo) are an important part of my life.



Mittens

Chris is an amazing and caring person, and I love him dearly. He keeps me balanced and in check when things go awry. No matter how hectic life gets for you, it is important for you to create and maintain a work-life balance. Yes, there will be cycles in your life where you'll need to put in the extra effort. But don't let it become a way of life. Spend time with the people that mean the most to you. *Life's too short... Get out and enjoy it!*

Helen D. Snow served as Dean of the Evening Division, School of Business, Northwestern University and was an Honorary Member of the Delta Chapter



The Naomi L Satterfield Memorial Scholarship is a fully funded endowment and scholarships are awarded in perpetuity against the interest earned

Your Scholarship Program

The Phi Chi Theta Educational Foundation Trustees are very proud of the scholarship program. During the 2007 Regional Meetings, the Foundation and the Fraternity awarded \$2,500 in scholarships: Naomi Satterfield Memorial Scholarship - \$1,000; Trustees' Scholarship in memory of Irene Meyer - \$500; Anna E. Hall Memorial Scholarship - \$500; and Helen D. Snow Memorial Scholarship - \$500.

During the 2008 Phi Chi Theta Fraternity National Meeting in Memphis, Tennessee, the Foundation will be awarding 5 scholarships:

Naomi Satterfield Memorial Scholarship - \$1,000;

Trustees' Scholarship - \$1,000;

Lester F. Richardson Memorial Scholarship - \$500;

Anna E. Hall Memorial Scholarship - \$500;

Helen D. Snow Memorial Scholarship - \$500.

The Foundation and the Fraternity want your members to apply for the 2008 scholarships.

Microsoft Word and Adobe Acrobat PDF versions of the application can be found on the Phi Chi Theta Educational Foundation's website: <http://www.phichitheta.org/foundation/foundation.htm>.

If you are graduating in May 2008, and not planning to be in school in the 2008-2009 academic year, you can be of assistance by advertising the scholarship program to your chapter. Members will apply if the message is there from other members. Mentioning the scholarship program at every meeting will ensure a successful number of scholarship applications being sent to the Foundation. **The scholarship program is a very good recruiting tool.** List the scholarship benefit in your handouts to prospective members.

If you do plan to apply for the scholarship applications, you should start the process as soon as your Fall Semester grades are on your transcript but



not later than April 1.

The application deadline is May 1, 2008.

However, the letters of recommendation and transcript are to be sent separately from the application to deem them official. Give the Registrar and people writing the letters of recommendation plenty of time, not only for them but for you to follow through that everything is complete.

Sometimes the scholarship committee has received an application but not the back-up material.

If you have any questions or need additional information, contact:

Phi Chi Theta Educational Foundation
c/o Mary Ellen Lewis,
Scholarship Committee Chair
1886 South Poplar Street
Denver, CO 80224-2271
E-mail: PCTEdScholarship@aol.com
Phone: 303-757-2535

Anna E. Hall was the last Founder to pass away in 1989. She led the Phi Theta Kappa convention in 1924 that resulted in the merger and creation of Phi Chi Theta and was an active member of the Chicago Alumni Chapter

Recognizing Scholastic Achievement

9

Since awarding our first scholarship in 2003, the scholarship committee has reviewed almost 50 applicants and has awarded 15 scholarships worth over \$9,500 to members who exemplify scholastic achievement, leadership and commitment to the ideals of Phi Chi Theta. We recognize and honor our past recipients and look towards the future as we look to recognize six scholarship recipients this coming summer

2003

Nicole Loncorich, *Gamma Iota, University of Colorado at Denver* (Trustees' Scholarship)

2004

Stacey Beckstrom, *Alpha Mu Chapter, University of Maryland* (Naomi L. Satterfield Memorial Scholarship)

Victoria Malan, *Delta Chi Chapter, California State University at Chico* (Trustees' Scholarship)

Helen Tran, *Beta Theta Chapter, Sam Houston State University* (Anna E. Hall/Helen D. Snow Scholarship)

2005

Kelly Ann Duncan, *Beta Chi – University of Tennessee at Martin* (Naomi L. Satterfield Memorial Scholarship)

2006

Sara Swanson, *Alpha Upsilon – Bradley University* (Naomi L. Satterfield Memorial Scholarship)

Rachel Nedelman, *Alpha Iota – Pennsylvania State University* (Naomi L. Satterfield Memorial Scholarship)

Rachel Payne, *Beta Chi – University of Tennessee at Martin* (Trustees' Scholarship)

Max Snitkovsky, *Epsilon – University of Pittsburgh* (Lester F. Richardson Memorial Scholarship)

Stephanie Zvonkovich, *Alpha Iota – Pennsylvania State University* (Anna E. Hall Memorial Scholarship)

Elise Marie Kidd, *Zeta Gamma – Univ. of Illinois, Urbana-Champaign* (Helen D. Snow Memorial Scholarship)

2007

Elise Marie Kidd, *Zeta Gamma – Univ. of Illinois, Urbana-Champaign* (Naomi L. Satterfield Memorial Scholarship)

Andrew Noh, *Zeta Beta – University of Michigan* (Anna E. Hall Memorial Scholarship)

Amy McMahon, *Zeta Beta – University of Michigan* (Helen D. Snow Memorial Scholarship)

Clare Abdalla, *Alpha Iota – Pennsylvania State University* (Trustees' Scholarship)

2008

Your Name Here, Apply Today!

Next Issue – Special Class of 2008 Edition

Your Online Resource for information and contributions:

Email the Foundation at FoundationInfo@phichitheta.org

Upcoming:

Honor Roll of Graduates

Where Are They Now?

Post Graduation – Staying Connected to PCT

Business Etiquette Tips from Ann Marie Sabath, Nat'l Honorary Member

Happy Spring!



Scholarship Applications are Due May, 1, 2008!

Visit our [website](#) to download your application



PHI CHI THETA EDUCATIONAL FOUNDATION 2008 Auction & Raffle—August 7-9, Memphis, TN Call for Donated Products & Services



The Foundation is sponsoring an Auction and Raffle at the 2008 National Chapter Meeting in Memphis, TN. Including an exciting Live Auction during the Saturday night Awards Banquet!

We are looking for chapters, members, colleagues, and businesses that are willing to donate products and services. Suggestions for Products to Donate for the Silent Auction & Raffle:

- **Gift certificates to retailers, restaurants, etc. (e.g., Borders, Best Buy, Macy's, TGI Fridays)**
- **Handmade products by Local Artists (e.g., scrapbooks, banners, teddy bears, pottery, glassware)**
- **Tech Gadgets—Laptops/Notebooks, Printers, DVD/Blu-ray, Wii, iPods/MP3, Digital Camera**
- **Merchandise from your school, chapter, or local community**

For the Live Auction we would like to secure some high-end products and services. For example:

- **Vouchers/tickets for airline, Amtrak, trips, cruises, hotel/resort, car rentals**
- **Condo/house rental at an exciting destination**
- **Spa/salon treatment**

- **Year's supply of a product/service**
- **Catered dinner by a renown chef, restaurant, etc**
- **Professional services (e.g., Career planning, financial or estate planning, legal, accounting, landscaping)**

- **Shopping Spree**
- **Tickets for Concerts, Theatre, Sporting Events**
- **Autographed merchandise**
- **Artwork**
- **Other Products—use your business creativity and ingenuity**

Incentive: Donate a product, service or cash and you will be entered into a drawing for a \$100 gift certificate

How to Get Involved: Please contact [Greg Holden by June 15](mailto:holden_greg@bah.com), at holden_greg@bah.com or 703-319-3826

All proceeds raised from the 2008 Auction and Raffle go to the Phi Chi Theta Educational Foundation to support its mission of providing scholarships and educational programs to the members of Phi Chi Theta Fraternity. Some conditions and limitations apply. Please visit the Foundation's booth at the National Meeting for more information. Cash, check, or credit card accepted. Checks should be made payable to Phi Chi Theta Educational Foundation.

The Phi Chi Theta Educational Foundation is recognized as a charitable and educational corporation. Therefore, any amount over the value of the product is tax deductible under Section 501(c)(3) of the Internal Revenue Code.